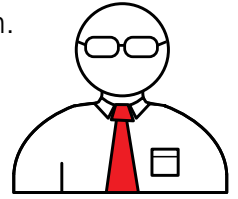


Billy's monthly budget planner

Fixed household costs: Things we 'need' that cost the same amount every month.

Essential living costs: Things we 'need' but the costs vary from month to month, or you may only have to pay for them a few times a year.

Non-essential living costs: Things we 'want' but don't necessarily 'need'.



Monthly income		£	<input type="text"/>
Fixed household costs		£	
		950	
		140	
		13	
Sub total	£		<input type="text"/>

Essential living costs		£	
		350	
		50	
		50	
		60	
		35	
		45	
		40	
Sub total	£		<input type="text"/>

Non-essential living costs		£	
		30	
		20	
		10	
Sub total	£		<input type="text"/>

Total monthly costs		£	<input type="text"/>
Difference		£	<input type="text"/>